

# JAMESTOWN YACHT CLUB



8/1/2015

2015 Summer Cruise

This booklet contains the details of this summer's cruise. We will head west, visiting Block Island, Shelter Island, Mystic Seaport and Stonington. We will be enjoying some of the most beautiful cruising ground in the world. Email me at [patriot367@yahoo.com](mailto:patriot367@yahoo.com) with any questions

Eddie Doherty – Cruising Chair

# Jamestown Yacht Club

## 2015 SUMMER CRUISE

### CRUISE OVERVIEW

The itinerary was designed to minimize adverse currents. We have a couple of laydays built into the schedule and will adjust as needed based upon the weather. Here is an overview of the cruise:

Day 1: Saturday August 1 – Depart Jamestown to Block Island – 20 nm

Day 2: Sunday August 2 – Depart Block Island to Coecles Harbor, Long Island – 34 nm

Day 3: Monday August 3 – Lay Day

Day 4: Tuesday August 4 -- Coecles Harbor to Deering Harbor – 7 nm (Mooring Reservation)

Day 5: Wednesday August 5 – Lay Day

Day 6: Thursday August 6 – Deering Harbor to Mystic Seaport – 26 nm (Dock Reservation)

Day 7: Friday August 7 – Lay Day Mystic Seaport

Day 8: Saturday August 8 – Mystic to Stonington, CT – 6 nm (Mooring/Dock Reservation)

Day 9: Sunday August 9 – Stonington, CT to Jamestown – 31 nm

**DURING TRANSIT JYC BOATS ARE ENCOURAGED TO MONITOR CHANNEL 72. RADIO CHECK IN WILL OCCUR ON THE HALF HOUR.**

**Reservation Information, please inform them you are with JYC:**

August 4 & 5 – Shelter Island Yacht Club – (631) 749-0888 or email [office@siyc.com](mailto:office@siyc.com)

August 6 & 7 – Mystic Seaport – (860) 572-5391 or email: [docks@mysticseaport.org](mailto:docks@mysticseaport.org)

**MYSTIC SEAPORT IS DOCK ONLY WITH THE COST AT \$4.50 PER FOOT. IT INCLUDES ENTRY FOR EVERYONE ON THE BOAT. THEY HAVE MEMBERSHIP RATES. THE SAVINGS FOR TWO NIGHTS FOR A “MARINER” MEMBERSHIP MIGHT BE A GOOD IDEA FOR YOUR BOAT.**

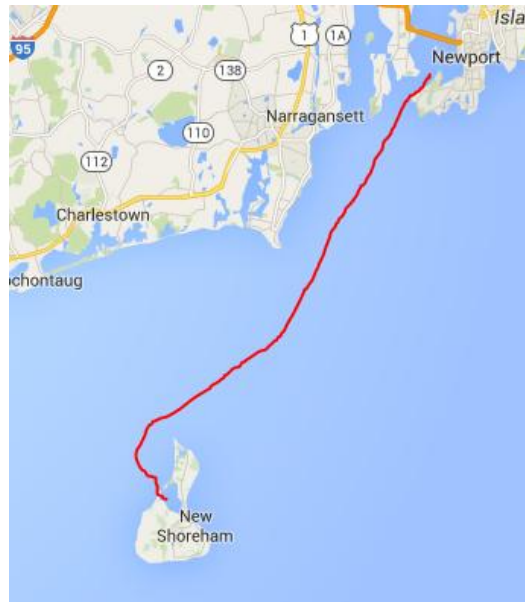
August 9 – Stonington, CT (Two Options)

Stonington harbor Yacht Club [www.shyc.us](http://www.shyc.us) or 860-535-0112 -- Dockage

Dodson Boatyard [www.dodsonboatyard.com](http://www.dodsonboatyard.com) or 860-535-1507 x117 – Moorings and Docks

## DAY 1 – SATURDAY AUGUST 1

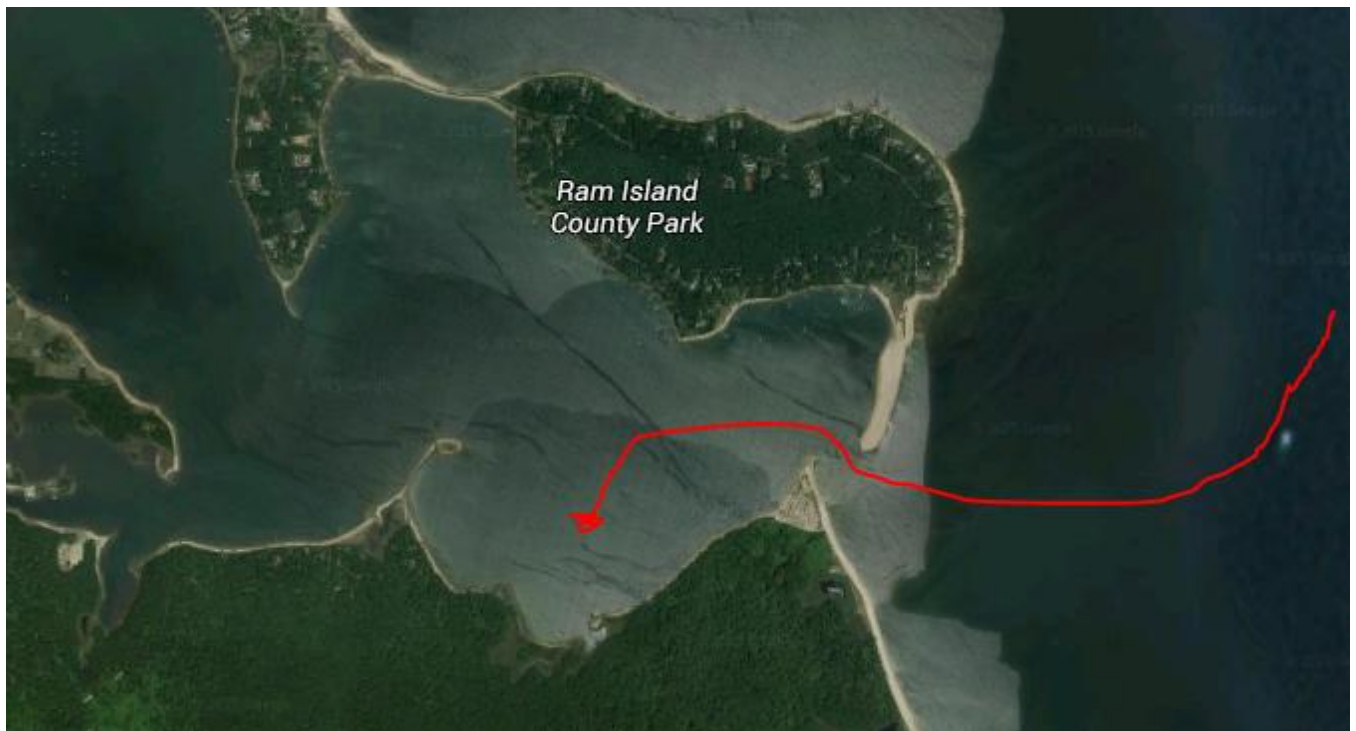
The fleet will depart Jamestown at their discretion. Current begins to ebb at 0942 in Narragansett Bay. Favorable Current at 1BI is only until 1238. It might be a good idea to deal with some negative current when leaving Narragansett Bay in the morning and then have it past Point Judith.



## DAY 2 – SUNDAY AUGUST 2<sup>ND</sup>

The trip from Block Island to Coecles Harbor has two main legs. The first leg is 26 nm at a bearing of 278M. The typical wind is SW or around 220M to 240M, meaning it's usually a close hauled sail. Favorable current is in the morning from 0733 to 1325. The second leg is after rounding 1"GI" is 245M for 7.5nm.

I will not be setting my departure time until the day before, once I know the weather forecast. I would really like to sail, so I might wait until the wind builds.

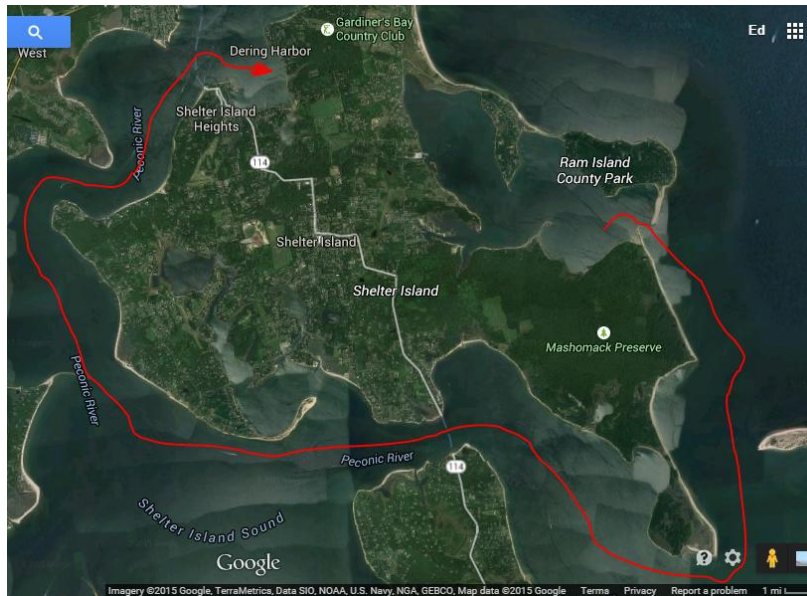


## DAY 3 – COECLES HARBOR – LAY DAY

The fleet will anchor in this beautiful and well sheltered harbor. If the conditions allow, the fleet will raft up. This is usually a highlight of the cruise. There is much to explore and the swimming is excellent.

## DAY 4 – COECLES HARBOR TO DEERING HARBOR – 7NM

This is a pleasant motor around Shelter Island. The fleet will depart around the same time and parade around the island.



## DAY 4 & 5 – DEERING HARBOR – SHELTER ISLAND YACHT CLUB

This area is a fun place to visit. You can rent bikes and explore the island or take the ferry over to Greenport.

Visiting yachtsmen are urged to reserve a mooring in advance. For information on availability, arriving yachts should hail the Shelter Island Yacht Club on VHF Channel 74 when approaching the island. Launch service is available by calling on Channel 74 or by sounding three blasts and displaying a "T" flag. Dinghies may land on the inland side of the southwest floating docks.

2015 Mooring Fees:

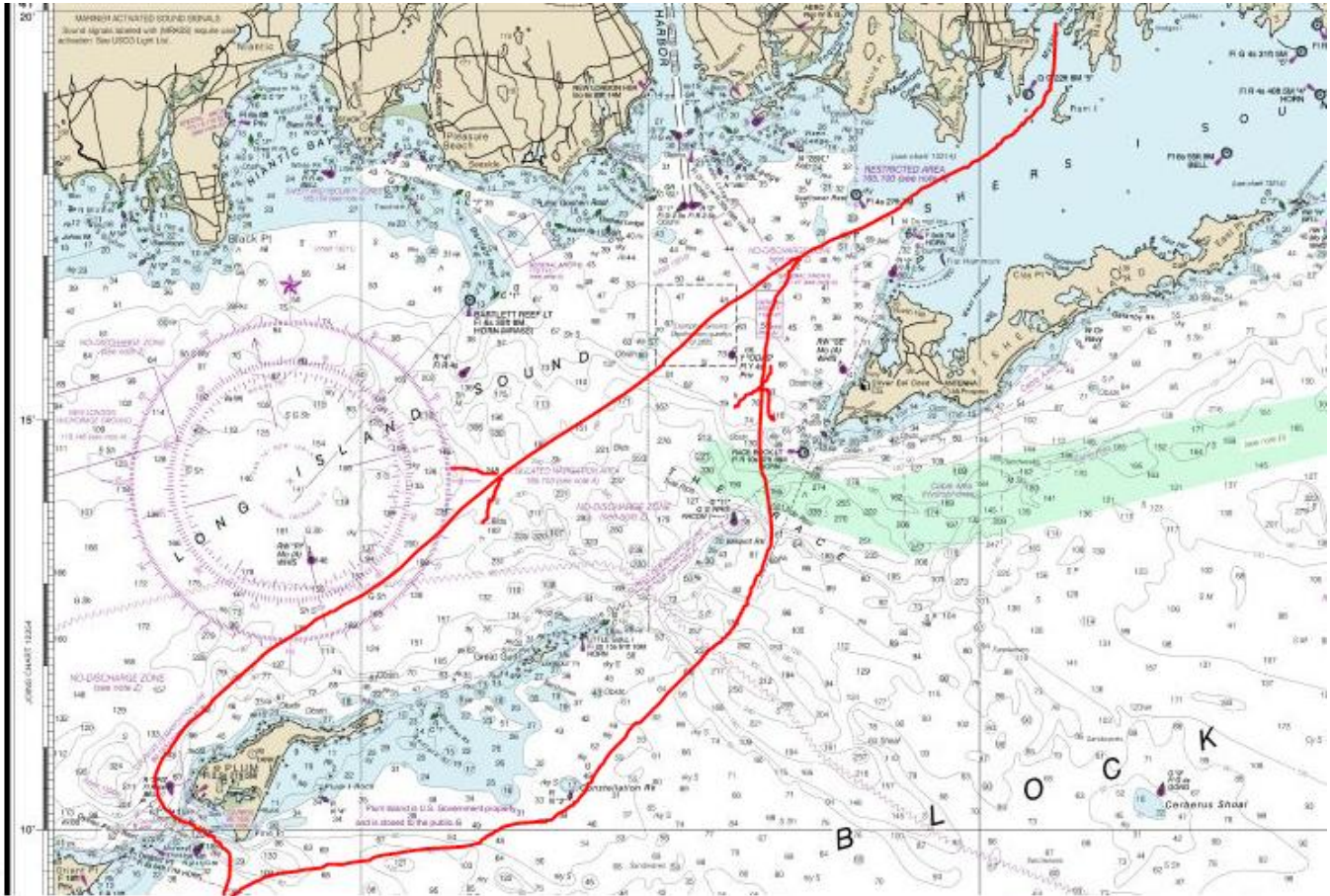
Boat length	to 35' = \$67	36'-52' = \$73	52+' = \$78
-------------	---------------	----------------	-------------



## DAY 6 DEERING HARBOR TO MYSTIC SEAPORT

This transit is the most challenging because of the current. We estimate leaving around 8am to go through the race at slack current. Plum Gut is an option as well. While we will be leaving in the morning, we will likely need to see what the forecast for the next day it.

The earliest we can arrive at Mystic Seaport is the 12:40pm bridge opening. The initial plan is for the lead boats to wait up at the entrance to the channel and then the fleet can parade up to the river to the seaport.



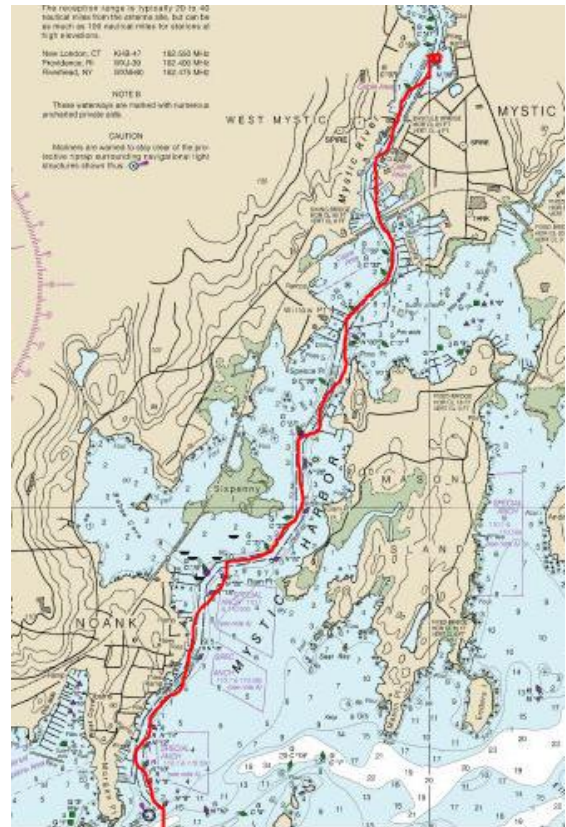
The trip up the river is very pretty and not too difficult the channel is well marked. The railroad bridge can cause some delay waiting for a train. The transit through the bridge in Mystic is really cool.

Mystic Seaport is an ideal destination, especially by boat. Located on the charming and historic Mystic River, we offer well-protected docks that are north of both bridges and just a short distance from Long Island Sound.

While docked at Mystic Seaport Marina, you will receive complimentary Museum admission. You can stroll through the 19th-century seafaring village, climb aboard historic vessels, and explore exhibit halls. You'll also have the unique opportunity to enjoy the beauty of our grounds in the evening after visitors are gone for the day, an experience that is the most magical part of their stay.

Dockage also includes free wireless internet, power, water, laundry facilities, and additional amenities. A courtesy van is available for trips to local grocery and marine supply stores. Downtown Mystic, located just a short walk from Mystic Seaport, offers a variety of dining and shopping options.

**WE HAVE RESERVATIONS FOR THE FLEET. PLEASE CONTACT THE SEAPORT ASAP AND MAKE YOUR RESERVATION UNDER JAMESTOWN YACHT CLUB. AFTER JULY 1<sup>ST</sup>, THEY WILL RELEASE THE RESERVATION. \$4.50 PER FOOT (LOA) — INCLUDES MUSEUM ADMISSION FOR THOSE ABOARD**



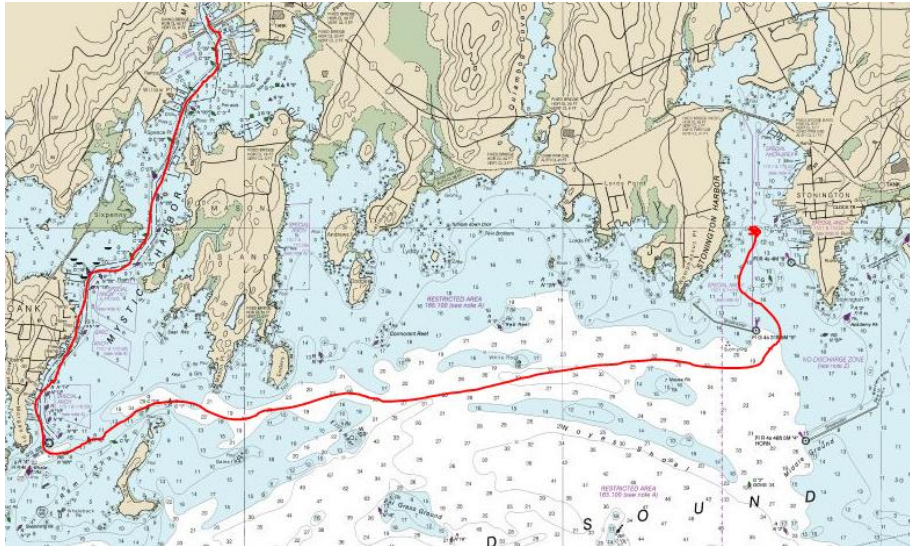
## DAY 7 – MYSTIC SEAPORT & NAUTICAL SCAVENGER HUNT

Admission to the Mystic Seaport is included, so please enjoy all it has to offer. There will be a nautical scavenger hunt for those who wish to participate. Open to all ages.

Mystic Seaport is 41° 21.57' N x 71° 57.92' W. Use U.S. chart #13214 and pay strict attention to the buoys. The channel is narrow and twisting; shoals abound just outside the channel. The Mystic River Railroad Bridge opens on call, unless a train is expected. The Mystic River Bascule Bridge (Route 1) opens at 20 minutes before each hour from 7:40 a.m. until 6:40 p.m. and opens on call prior to 7:40 a.m. and after 6:40 p.m. Both bridges monitor radio channels 9 and 13.

## DAY 8 – MYSTIC TO STONINGTON, CT

This is a short trip down the river and over to Stonington, CT



The fleet will likely have an end of cruise cocktail social.



194 Water Street  
Stonington, CT 06378  
Ph 860/535-1507 Fax 860/535-1462

# Stonington Harbor Yacht Club

» HOME PAGE » JR & FAMILY SAILING

» Home » Location » About Us » Services » News » Contact

Stonington harbor Yacht Club [www.shyc.us](http://www.shyc.us) or 860-535-0112 -- Dockage

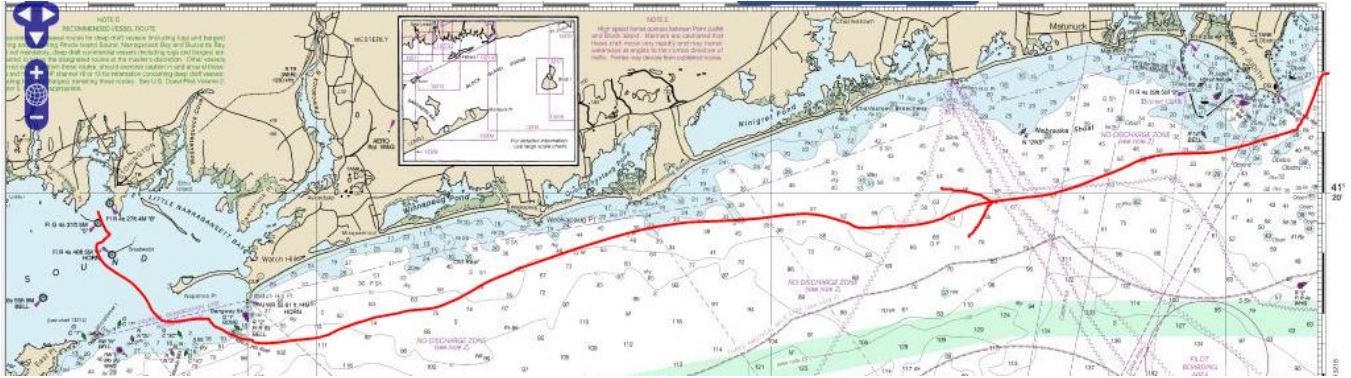
Dodson Boatyard [www.dodsonboatyard.com](http://www.dodsonboatyard.com) or 860-535-1507 x117 – Moorings and Docks

Stonington is Connecticut's oldest borough, settled by homesteaders from the Plymouth Colony. On the knoll known as Pine Point, a Victorian mansion crowned with an octagonal cupola, the Nathaniel Palmer House, attests to the fortunes a 19th century sea captain could aspire to here. History remembers Palmer's discovery of Antarctica, when he left Stonington at age 21 in search of new seal rookeries and found penguins instead. That was the least of his accomplishments, however. When clippers were the fastest things going (they got their name for 'clipping' days off of a cargo's ETA), their captains were as lionized as sports heroes of today.



## DAY 9 – STONINGTON, CT TO JAMESTOWN, RI

The currents are favorable in the morning and a departure around 0830 should allow for several hours of current helping us home.



Day	Date	Leg	Start	Finish	Bearing	Distance	Currents at:	Favorable	Max	Comments				
Saturday	1-Aug	Jamestown to Block Island	R"6" Castle Hill	1"BI"	233	15.3	Castle Hill	0942-1630	1.4 at 1258	ETD AM				
			1"BI"	R"2" New Harbor	209	3.5		0717-1238	1.3 at 0858					
					Total		18.8							
Sunday	2-Aug	Block Island to Coecles Hbr	R"2" New Harbor	1"GI" Gardiners I.	278	25.7	Carbares Shoal	0733-1325	1.3 at 1104	ETD 0700				
			1"GI"	G"1" Coecles Hbr	245	7.5		0736-1339	1.8 at 1022		Wind usually on the nose			
					Total		33.2							
				ALT Route S. of Gardiners	R"2" New Harbor	RW"M" Montauk Hbr	261	17.2				ETD 0700		
					RW"M"	N"2" Goff Point	252	4.8	Goff PT	0602-1223	1.8 at 0814			
					N"2"	N"4"	252	1.0						
					N"4"	N"6"	292	1.4						
					N"6"	N"8"	330	1.1						
					N"8"	G"11"	352	1.6						
					C"11"	TP off of Lionhead Rock	352	0.8	Hog Creek Pt	0652-1227	0.5 at 0950			
			TP	G"1" Coecles	292	5.5	May be able to sail							
					Total					33.4				
Monday	3-Aug	Layover Coecles												
Tuesday	4-Aug	Coecles Hbr to Deering Hbr	G"1" Coecles	RW"N"	25	2.0				ETD late AM				
			RW"N"	R"2" Long Beach Pt.	292	1.8								
			R"2"	G"7"	305	1.1								
			G"7"	TP Hay Beach Pt.	280	0.7	Hay Beach	1009-1633	2.1 at 1241					
			TP	Deering Hbr.	228	1.4								
		Total		7.0										
Wednesday	5-Aug	Layover Deering Harbor												
Thursday	6-Aug	Deering Hbr to Mystic	Deering Hbr	TP Hay Beach Pt	48	1.4	Hay Beach	0556-1203	1.3 at 0656	ETD 0800				
			TP	G"7"	100	0.7								
			G"7"	R"2" Long Beach Pt.	125	1.1						Take advantage of morning currents, thru race at slack, buck current in FI Sound.		
			R"2"	RW"N"	112	1.8								
			RW"N"	1"GI" Gardiners I.	74	6.0	1"GI"	0446-1111	1.8 at 0750					
			1"GI"	TP off N. Dumpling Rock	47	10	East of Little Gull I.	0506-1124	4.8 at 0702			cross current in race		
			TP	Whale Rock	66	2.2	S. of Ram I	1641-2316	1.9 at 1930					
			Whale Rock	Mystic R. Drawbridge	Channel	2.5								
					Total		25.7							
					Alt route thru Plum Gut	Deering Hbr	TP Hay Beach Pt	48	1.4		Hay Beach	0556-1203	1.3 at 0656	Curentns are unfavorable unless you want a late day sail with arrival at dusk
			TP	G"7"	100	0.7								
			G"7"	R"2" Long Beach Pt.	125	1.1								
			R"2"	RW"N"	112	1.8								
			RW"N"	Plum Gut	40	4.5								
			thru gut	R"2PG"	0	0.5	Plum Gut	1017-1627	2.2 at 1255					
			R"2PG"	TP FI Sound	66	10.5	Bartlett Reef	1622-2207	1.4 at 1849					
			TP	Whale Rock	66	2.2	S. of Ram I	1641-2316	1.9 at 1930					
			Whale Rock	Mystic R. Drawbridge	Channel	2.5								
					Total				25.2					
Friday	7-Aug	Layover Mystic Seaport	(or go to Stonington)											
Saturday	8-Aug	Mystic to Stonington		River Entrance at Daybeacon	Channel	2.3				Short trip				
				Mystic River Bridge	C"1" Ram I	Channel	0.6							
				Channel N. of Ram I.	Stonington Breakwater	98	2.8	S. of Ram I	0220-1236		1.5 at 0905			
				C"1" Ram I	Dobsons	28	0.9							
		Stonington Breakwater		Total		6.6								
Sunday	9-Aug	Stonington to Jamestown		Breakwater	208	0.9				ETD mid morning to ride currents				
				Dobsons	G"3"	201	0.7							
				Breakwater	R"8" Napatree	138	1.3	Napatree Pt	0724-1325		1.9 at 0947			
				G"3"	R"2" Watch Hill	105	1.4							
				R"8" Napatree	R"4" Hbr of Refuge	95	16.2	Quonochontaug Beach	0858-1350		0.4 at 1045			
				R"2" Watch Hill	TP off Pt Judith	95	2.0					Pt Jude	0839-1353	0.4 at 1041
				R"4" Hbr of Refuge	R"6" Castle Hill	53	7.6					Castle Hill	1133-1700	0.7 at 1432
			TP		Total				30.1					

Cruise Information – Courtesy of Vic Calabretta